

Stainless load link

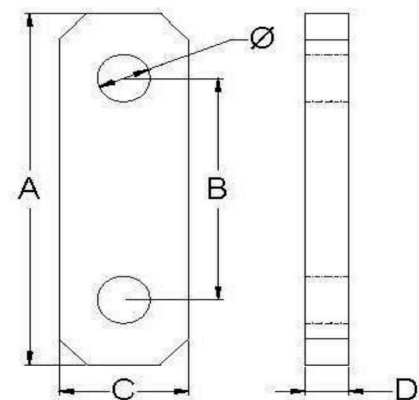
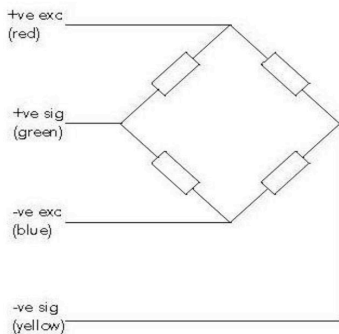


TD

- Highly accurate and reliable, $\pm 0.1\%$ FS accuracy.
- Robust high strength steel construction for use in hostile environments.
- For use with standard shackles.
- Sealed to IP 68.
- Supplied with 10 mtrs. Cable and full certificate of calibration.



Specifications						
Full Load Output:	1 (nominal) mV/V					
Zero Load Output:	< $\pm 2.0\%$					
Excitation (Max):	10 (15) V					
Repeatability:	<0.05%					
Input Resistance:	375 (± 20) Ω					
Output Resistance:	350 (± 2) Ω					
Compensated Temp. Range:	-10 to 40 $^{\circ}\text{C}$					
Operation Temp. Range:	-20 to 60 $^{\circ}\text{C}$					
Temp. Coefficient on Zero:	<0.0010 %Capacity/ $^{\circ}\text{C}$					
Temp. Coefficient on Span:	<0.0010 %Capacity/ $^{\circ}\text{C}$					
Safe Overload:	300%					
Insulation:	>500 @100Vdc M Ω					
Item No:	Capacity (T)	A (mm)	B (mm)	C (mm)	D (mm)	Dia. (mm)
TD1,5	1,5	175	110	70	17	16
TD2,5	2,5	185	120	70	25	20
TD5	5	185	120	70	25	26
TD7,5	7,5	200	135	75	25	35
TD10	10	270	170	90	30	36
TD12,5	12,5	270	170	90	30	39
TD15	15	270	170	90	30	43
TD20	20	350	220	120	50	52
TD25	25	350	220	120	50	52



Vetec A/S - Teknikvej 69 - DK-5260 Odense S - Denmark - SE/CVR-no. 27414621

Mail: post@vetec.dk - Phone: 0045 6590 5802