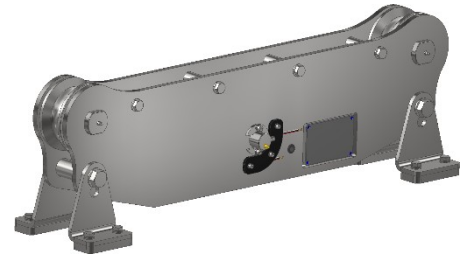


# Running Line Tensiometer

RLT

**vetec**  
a part of Nordtech-Vetec

- Combined load indication and load limitation system for moving wires.
- Accuracy down to 1%.
- Heavy duty ball bearing construction.
- Hardened stainless load pin.
- 4 standard housing models.
- Wide assortment of mounting accessories.
- Available in Galvanized/Stainless Steel for corrosive environments.
- Payoutcounter included.



Specifications						
Capacity	1-90T according to customer specifications.					
Wire size	14-44 mm					
Output signal	1mv/v at full load					
IP class	IP67					
Relative humidity	>98%					
Operating temp.	-20°C to +60°C. Under 0°C a heating device is recommended.					
Item no.	Wire dia. (mm)	Crane capacity (Ton)	A (mm)	B (mm)	C (mm)	Weight (kg.)
RLT1-14	12-14	$\geq 2 \leq 15$	714	227	182	23,8
RLT1-16	15-16	$\geq 2 \leq 15$	714	227	182	23,5
RLT1-19	17-19	$\geq 2 \leq 15$	714	227	182	22,9
RLT2-22	20-22	$\geq 3 \leq 25$	803	288	210	46,1
RLT2-25	23-25	$\geq 3 \leq 25$	803	288	210	45,5
RLT2-28	26-28	$\geq 3 \leq 25$	803	288	210	44,8
RLT3-32	30-32	$\geq 7 \leq 60$	958	300	210	53,3
RLT3-35	33-35	$\geq 7 \leq 60$	958	300	210	52,5
RLT3-38	36-38	$\geq 7 \leq 60$	958	300	210	51,8
RLT4-44	42-44	$\geq 10 \leq 90$	1026	334	210	63,5
Accessory options	Wire dia. (mm)		L <sub>Min.</sub> (mm)	L <sub>Max.</sub> (mm)		Weight (kg.)
RLT1 Mountingarm	14-19		1150	1600		12
RLT2 Mountingarm	22-28		1150	1600		12
RLT3 Mountingarm	32-38		1150	1600		12
RLT4 Mountingarm	44		1150	1600		12
Complete systems	Item no.	Description				
Load limitation	RLT + T1-L-RS485	Tensiometer + Amplifier				
Load indication and limitation	RLT + P4 / D2 / D4	Tensiometer + Display w. Amplifier				

## Dimensions

