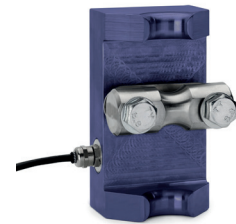


Static Line Tensiometer

Ver. 1.4

- Combined load indication and load limitation system for hoisting devices, cranes and overhead cranes.
- Electronic clamp-on tensiometer, universal fit.
- Highly accurate and reliable, $\pm 1\%$ FS accuracy.
- Minimal lifting height reduction. Down to L100 mm.
- Anodised aluminium for better protection against corrosion
- Quick and easy to install on the dead end of the wire rope.
- Designed and manufactured in DK for high quality assurance.



Specifications				
Accuracy	$\pm 1\%$ FS			
On unit	0.1% FS			
Mounted	0.1% x wire diameter x2			
Output	2.0 Nom MV/V balanced signal			
Material	Alu 7075			
Temperature	0,0011 MV/C			
Input	EXC. 5-10 VDC			
Cable	3 meters.			
Item no.	Wire (mm)	Capacity (T)	Dimensions (mm)	Weight (kg.)
WT1-B	6-15 mm	5T per reeving	L100 x W55 x H42	0,8 kg.
WT2-B	14-28 mm	10T per reeving	L135x W74 x H55	1.5 kg.
Complete systems				
Load limitation	WT1-B / WT2-B + T1-L-RS485		Tensiometer + Weight transmitter	
Load indication and limitation	WT1-B / WT2-B + P4 / D2 / D4		Tensiometer + Display w. Amplifier	

